

VANDERPLOEG
Design & Drafting, LLC
515-249-1134

Afton

**Morton
Meyers**

VANDERPLOEG DESIGN & DRAFTING, LLC
DESIGNER, ARCHITECT, ENGINEER, OR
DIMENSIONAL ERRORS AND OMISSIONS. WE ARE NOT A
LICENSED ARCHITECT OR ENGINEER. FOR STRUCTURAL
EXPRESSIONS OF IMPLIED WARRANTIES ARE MADE CONCERNING
COMPLIANCE WITH APPLICABLE BUILDING CODES. PLEASE CHECK
WITH LOCAL BUILDING OFFICIALS TO DETERMINE COMPLIANCE.

SCALE 1/4" = 1'

DATE 7-18-2013

PLAN # 113050

DRAWN BY TVP

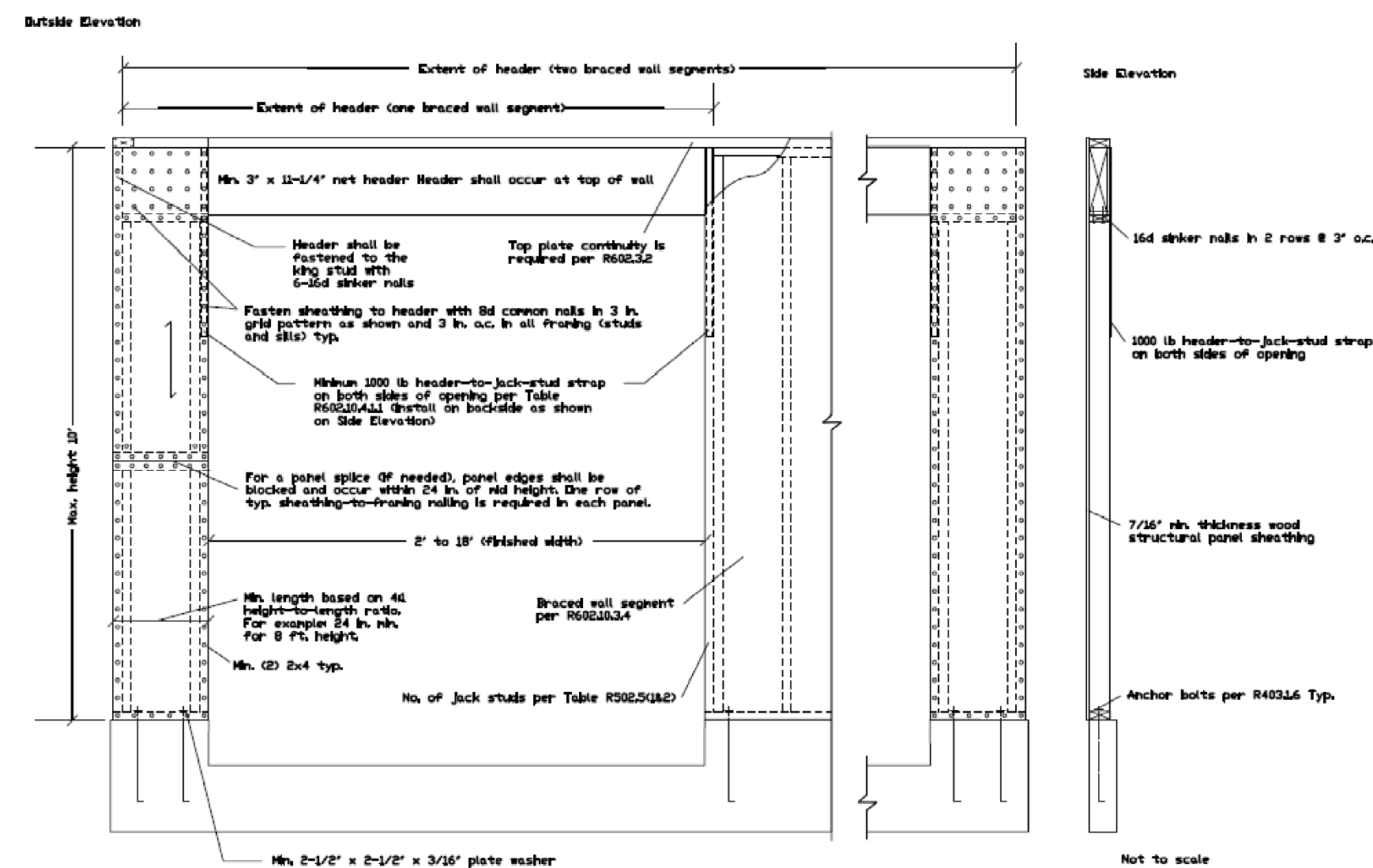
REVISION

SHEET 1 of 3

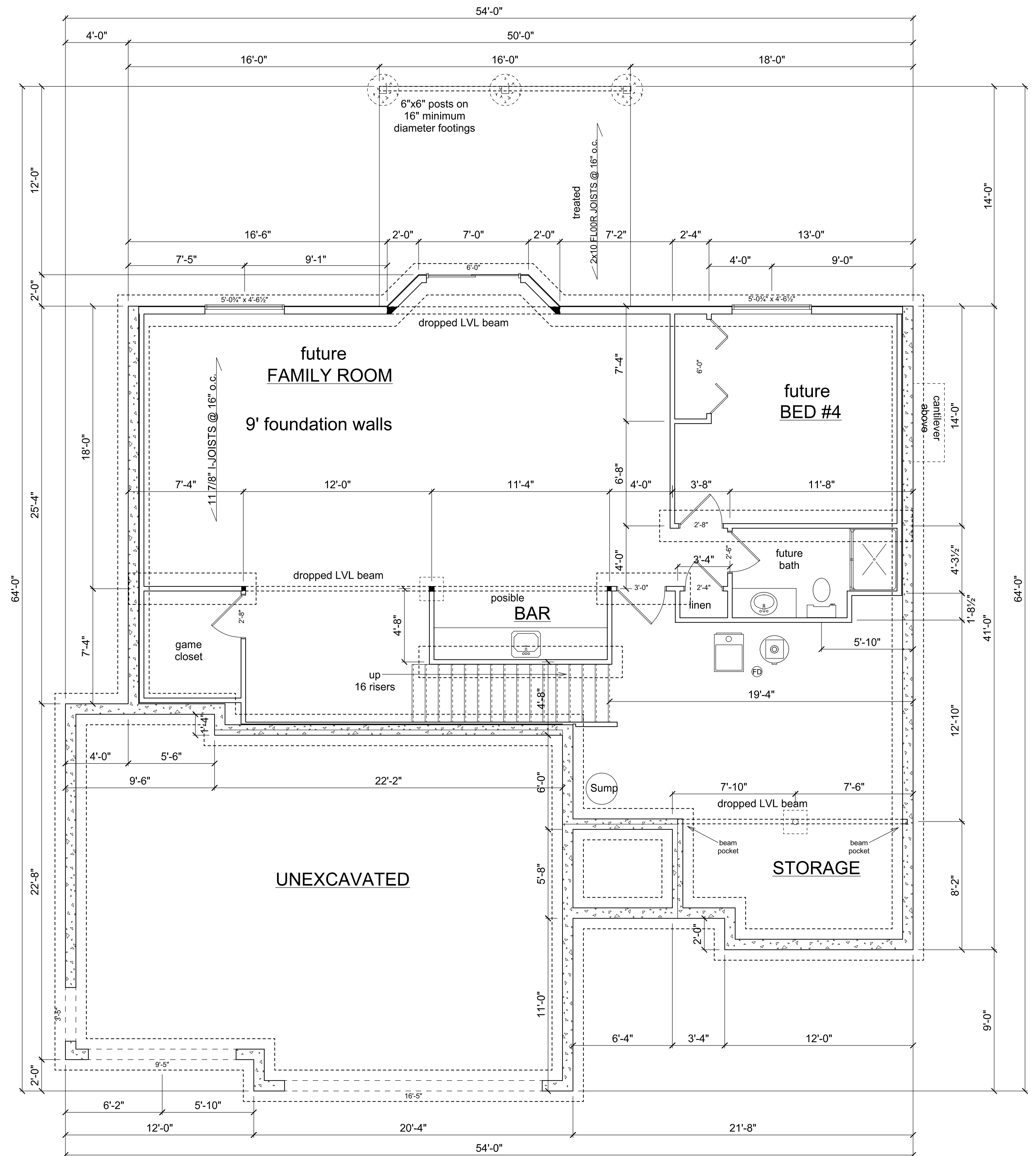
APPROVED

General Notes

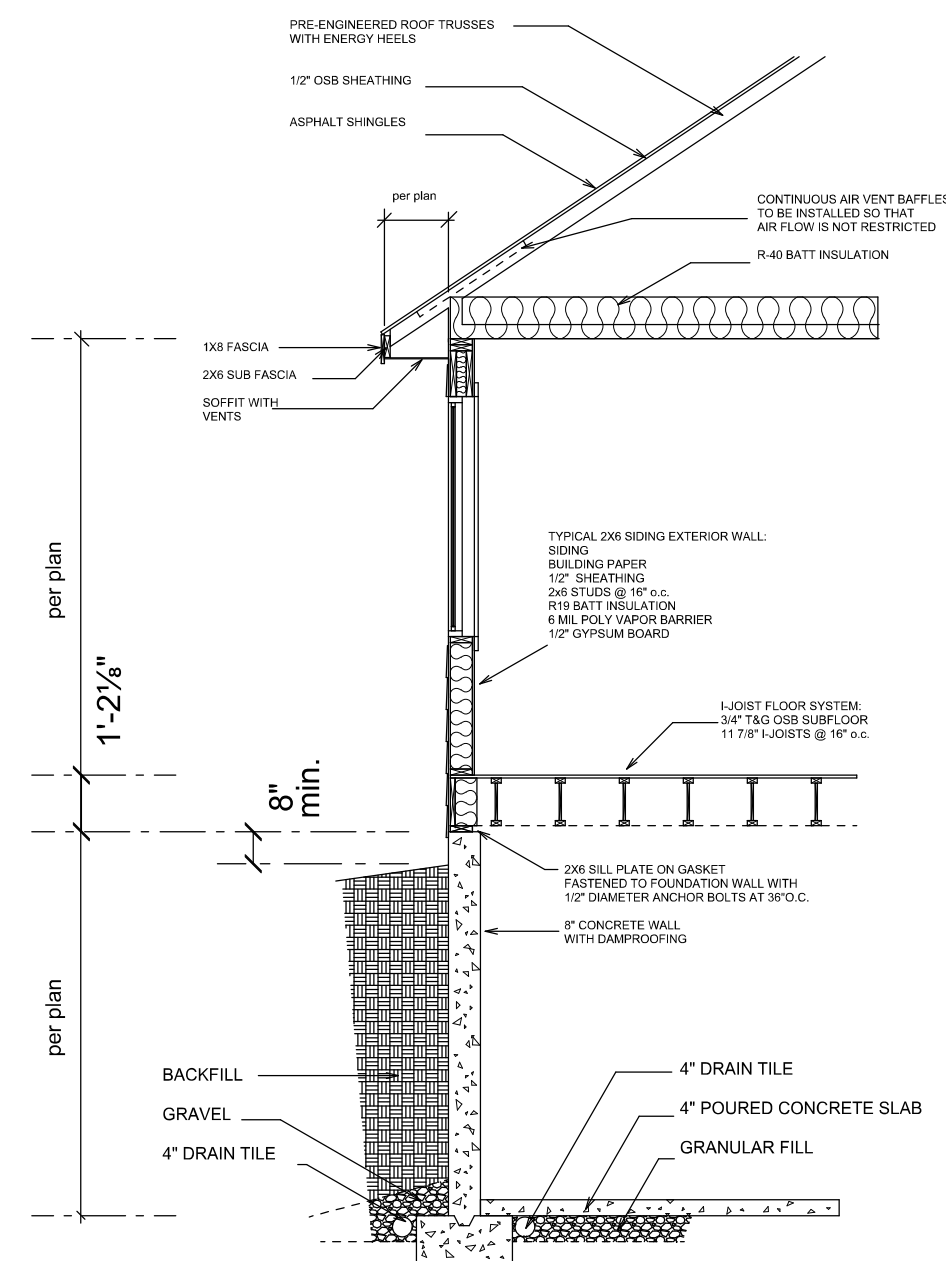
- Verify local frost depth requirements
- All footings designed for 2000 PSF soil bearing capacity
- 8" poured concrete foundation walls w/ 16"x8" concrete footings w/ (2) #4 rerods continuous
- 2-2x12 headers over all exterior openings unless noted otherwise
- truss manufacturer to size members and set spacing of all floor and roof trusses (max spacing 24" o.c.)
- bedroom windows and basement egress windows to meet or exceed egress requirements
- verify all rough opening sizes
- place smoke detectors as required by local building codes
- follow manufacturer's instructions for installation of all components



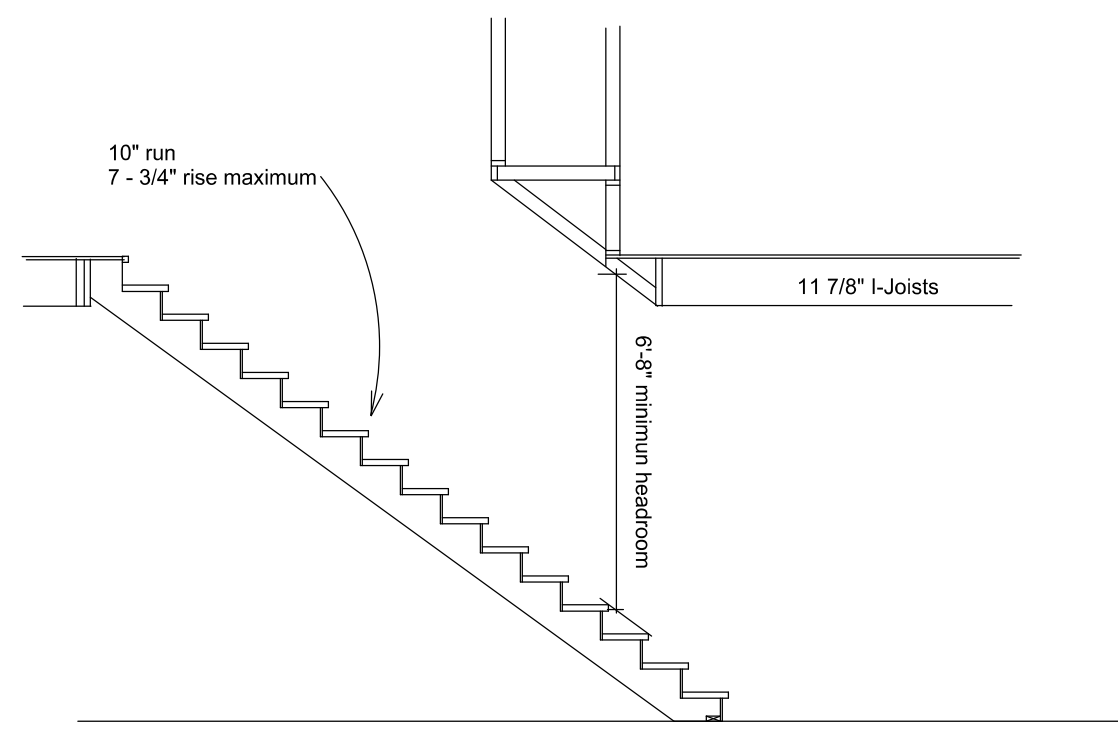
NARROW WALL BRACING DETAIL



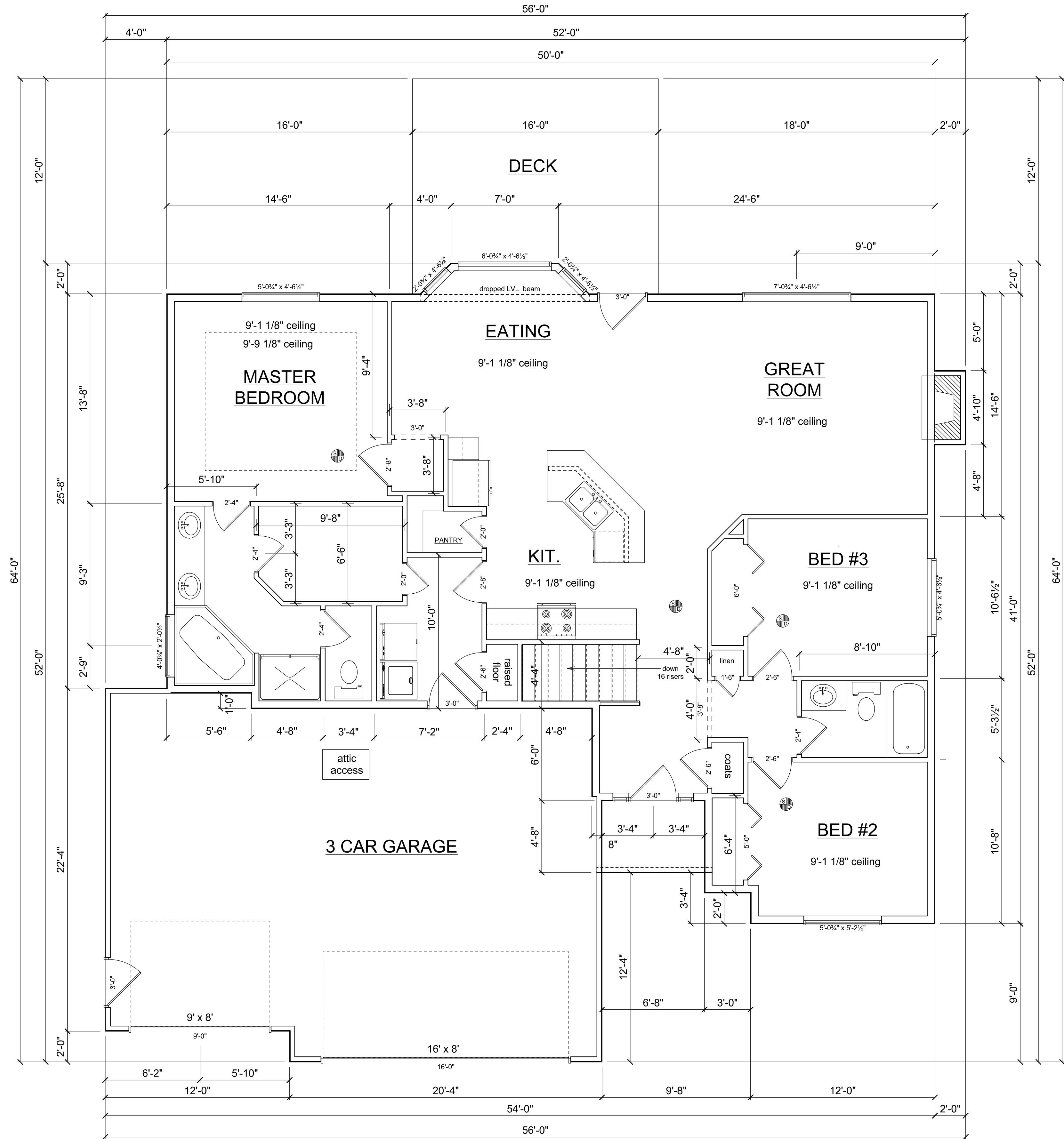
FOUNDATION PLAN



Wall Section



Stair Section



MAIN FLOOR PLAN

1610 SF